

# Mouse SEZ6 Protein; His Tag

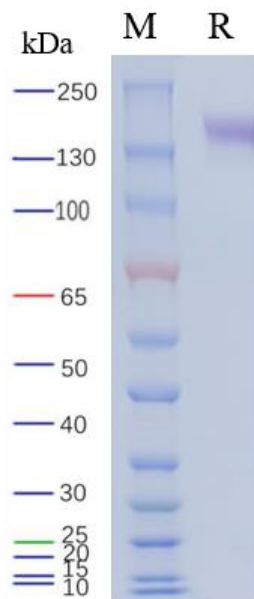
## Product Information

Product Name	Mouse SEZ6 Protein; His Tag
Storage temp.	Store at $\leq -70^{\circ}\text{C}$ , stable for 6 months after receipt. Recommend to aliquot the protein into smaller quantities for optimal storage. Please minimize freeze-thaw cycles.
Catalog# / Size	GM-86897RP-100 / 100 $\mu\text{g}$ GM-86897RP-1000 / 1 mg

## Protein Information

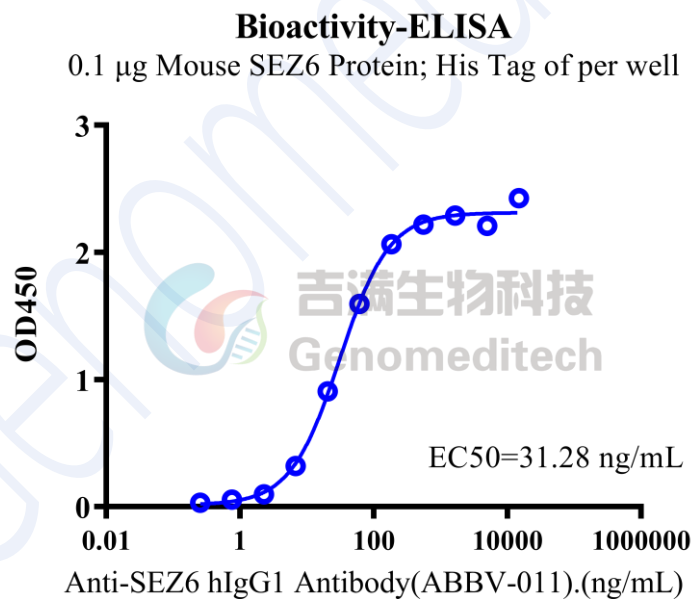
Alternative Names	BSRPC, Seizure-related 6
Source	Mouse SEZ6 Protein; His Tag (GM-86897RP) is expressed from human 293 cells (HEK-293). It contains AA Leu 20 - His 922 (Accession # Q7TSK2-1). This protein carries a His tag at the C-terminus.
Purity	> 95% as determined by SDS-PAGE
Endotoxin	< 1 EU/ $\mu\text{g}$ , determined by LAL gel clotting assay
Predicted Mol Mass	100.1 KDa
Formulation	Supplied as a 0.2 $\mu\text{m}$ filtered solution of PBS, pH7.4.
Description	<p>SEZ6 (Seizure-related 6) protein is a neuron-specific protein belonging to the SEZ6 family. The SEZ6 family includes three members: SEZ6, SEZ6L, and SEZ6L2, which play important roles in the nervous system. SEZ6 protein is mainly expressed in the brain and nervous system, with multiple functions.</p> <p>SEZ6 protein plays a key role in the development of neurons and synapse formation. It is involved in regulating the formation and stability of synapses, playing an important role in the connection and communication of neurons. SEZ6 protein also participates in the migration, differentiation, and maturation processes of neurons, playing a crucial role in the normal function of the nervous system.</p> <p>In addition to its role in the nervous system, SEZ6 protein also plays an important role in cognitive function, behavior, and neuropsychiatric disorders. Studies have shown that SEZ6 protein is closely related to the occurrence and development of diseases such as autism and schizophrenia. Therefore, SEZ6 protein is considered an important molecule in research on the development of the nervous system and neuropsychiatric disorders.</p>

## SDS-PAGE



On SDS-PAGE under reducing (R) condition. The gel was stained overnight with Coomassie Blue. The purity of the protein is greater than 95%.

## Bioactivity-ELISA



Mouse SEZ6 Protein; His Tag (Catalog # GM-86897RP) was immobilized at 1  $\mu\text{g}/\text{ml}$  (100  $\mu\text{L}/\text{well}$ ). Increasing concentrations of Anti-SEZ6 hIgG1 Antibody (ABBV-011) (Catalog # GM-86544AB) were added.